

# Upland Bird Hunting

## OVER DEUTSCH KURZHAAR POINTERS INCLUDING PARTRIDGE, QUAIL, GUINEA FOWL, DUCKS & GEESE.

A mixed bag shoot will allow a combination of up to 20 wild birds per gun per day.

**SEASON:** May 15th – September 15th

**LODGING:** 10 x Double Guest rooms. Sleeps 20 x Guests sharing.

**GROUP SIZE:** 1-8 Guns (*Minimum of 4 guns for closed groups to secure 100% lodge exclusivity.*)

**DURATION:** Minimum of 3 nights & 2-3 shooting days.

**OPEN SEASON:** May – September (Best after June / July maize harvest)

### STANDARD RATES – ALL INCLUSIVE!

|                     |         |          |
|---------------------|---------|----------|
| 1 x hunter          | p/night | \$ 1,300 |
| 2-4 x hunters       | p/night | \$ 750   |
| 5-8 x hunters       | p/night | \$ 650   |
| Non-Shooter sharing | p/night | \$ 275   |

### FATHER & SON SPECIAL

(Sharing a room - under 23 years old)

Father: \$650 p/night | Son: \$350

- Add a Wild Guinea fowl Driven Hunt for an additional \$1,200 per group per day.
- Driven hunts include 10-20 beaters and well-coordinated planning.
- Ideal for groups of 4 guns or more.
- Note: A Driven shoot has to be arranged 30+ days prior to commencement date.
- Non-refundable if cancelled less than 30 days prior to hunt.

## TYPICAL ITINERARY:

5 Nights

### Day 1: Arrival

- Assistance and collection at Johannesburg Int. Airport.
- 2 Hour Drive to Glen Guinea Lodge.
- Afternoon shoot if time allows

### Day 2: Upland Birds

- Full Day Upland Birds Over Pointers

### Day 3: Ducks and Geese (Optional)

- Early Morning Ducks and Geese & Afternoon Upland Birds

### Day 4: Upland Birds

- Full Day Upland Birds Over Pointers

### Day 5: Ducks and Geese (Optional)

- Early Morning Ducks and Geese & Afternoon Upland Birds

### Day 6: Departure

- Morning shoot over pointers if time allows
- Depart for 2 Hour Drive to Johannesburg Int. Airport

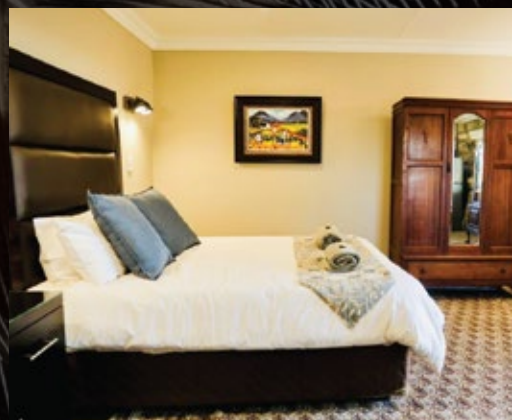


**WINGSHOOTING**  
AFRICAN FRONTIER SAFARIS

**AFRICAN  
FRONTIER SAFARIS**

**THE SPIRIT OF AFRICA**

**GLEN GUINEA LODGE  
FREE STATE PROVINCE,  
SOUTH AFRICA**







### DAILY RATES INCLUDE:

- Full time correspondence from the moment you book your trip.
- Assistance and transfers from Johannesburg International Airport to Glen Guinea Lodge and back to JHB International Airport.
- Ammunition / Shells (Limited to 100 shells per gun per day)
- Shotgun Rental
  - Beretta A300 Semi-Auto
  - Beretta Silver Pigeon 686 O/U
- Hunting License
- Gun Dogs
- PH's, Guides, Field staff, Field transfers
- 100% Exclusive/private lodging for closed groups
- Private ensuite double bedroom / bathroom
- Wifi
- Gun cleaning service
- Breakfast, lunch, appetizers and dinner
- All beverages, local beers and local hard liquor (in moderation). Top-shelf brands available at additional cost.
- Chef's selection of high-quality South African wines for each evening. Private selection of Flagship Cape Wines available at additional cost.

### DAILY RATES EXCLUDE:

- Airfare (Private Charters can be arranged)
- Gratuities toward Guide & Staff
- Additional ammunition at \$25 per box of 25 shells \*Prices subject to change.
- Non-hunting Activities.
- Other activities available on request.

### TERMS & CONDITIONS:

- All prices are quoted in US dollar and are subject to change due to inflation and exchange rate.
- "Show Specials" in the form of hunting packages will be advertised during the main marketing season. African Frontier Safaris reserves the right to withdraw these packages at any given time.
- A deposit of 50% of daily rate is required for reservation, unless stipulated otherwise. Deposits are non-refundable if cancelled less than 60 days prior to Safari dates, unless re-booked. Any loss in Rand Value, due to fluctuation of exchange rate, will be subtracted from the initial deposit refund (a complete breakdown will be provided).
- Balance of Safari is payable before departure.
- All credit cards, cash and transfers are accepted, except for American Express.

FOR THE NON-HUNTING COMPANIONS, WE RECOMMEND A FRIDAY OR SATURDAY DAY TRIP TO THE BEAUTIFUL TOURIST TOWN OF CLARENCE, SITUATED IN THE MALUTI MOUNTAINS ONLY 1.5 HOUR AWAY FROM THE LODGE. THIS QUAIN SCENIC TOWN OFFERS ANYTHING FROM GOLFING & HIKING TRAILS TO UNIQUE SHOPPING, CHEESE OR BEER TASTING AND GOOD FOOD ALL AROUND.

\*MASSAGES & SPA TREATMENTS SHOULD BE BOOKED IN ADVANCE.

www.africanfrontiersafaris.com  
office@africanfrontiersafaris.com  
+27 76 735 5463 | +27 83 268 0980 | +27 72 659 9488

VISIT  
OUR WEBSITE



SCAN ME TO FOLLOW ON  
@africanfrontiersafaris

